

NON-EXTENDABLE FOUNDATIONS FOR SITE LIGHTING OR ANY POLE SUPPORT

To help you determine the type and size of power-installed foundation for your requirements, furnish the following data to your Chance representative:

1. Complete the form on the facing page.

Make copies as needed for separate applications.

2. Refer to the soil classification chart below and/or furnish boring logs/report information if available.

Chance applications engineers then can match a foundation to meet your performance criteria with computer-assisted design capabilities through interactive software programs.

SOIL CLASSIFICATION DATA

Class	Common Soil-Type Description	Geological Soil Classification	Probe Values in.-lbs. (Nm)	Typical Blow Count "N" per ASTM-D1586
0	Sound hard rock, unweathered	Granite, Basalt, Massive Limestone	N.A.	N.A.
1	Very dense and/or cemented sands; coarse gravel and cobbles	Caliche, (Nitrate-bearing gravel/rock),	750-1600 (90-208)	60-100+
2	Dense fine sand; very hard silts and clays (may be preloaded)	Basal till; boulder clay; caliche; weathered laminated rock	600-750 (78-98)	45-60
3	Dense clays, sands and gravel; hard silts and clays	Glacial till; weathered shales, schist, gneiss and siltstone	500-600 65-78	35-50
4	Medium dense sandy gravel; very stiff to hard silts and clays	Glacial till; hardpan; marls	400-500 (52-65)	24-40
5	Medium dense coarse sand and sandy gravels; stiff to very stiff silts and clays	Saprolites, residual soils	300-400 (39-52)	14-25
6	Loose to medium dense fine to coarse sand; firm to stiff clays and silts	Dense hydraulic fill; compacted fill; residual soils	200-300 (26-39)	7-14
**7	Loose fine sand; Alluvium; loess; soft-firm clays; varied clays; fill	Flood plain soils; lake clays; adobe; gumbo, fill	100-200 (13-26)	4-8
**8	Peat, organic silts; inundated silts, fly ash	Miscellaneous fill, swamp marsh	less than 100 (0-13)	0-5

Class 1 soils are difficult to probe consistently and the ASTM blow count may be of questionable value.

**It is advisable to install anchors deep enough, by the use of extensions, to penetrate a Class 5 or 6, underlying the Class 7 or 8 Soils.

INSTALLATION OF CHANCE FOUNDATIONS

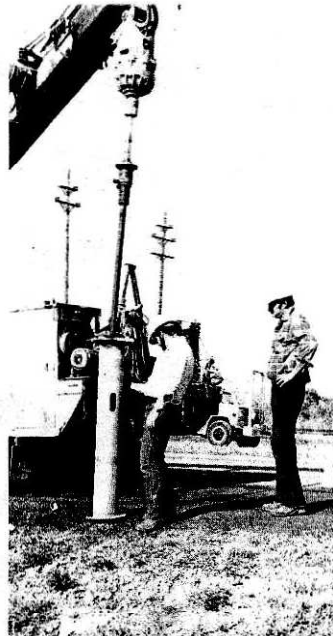
Unloading foundation from digger/derrick truck.



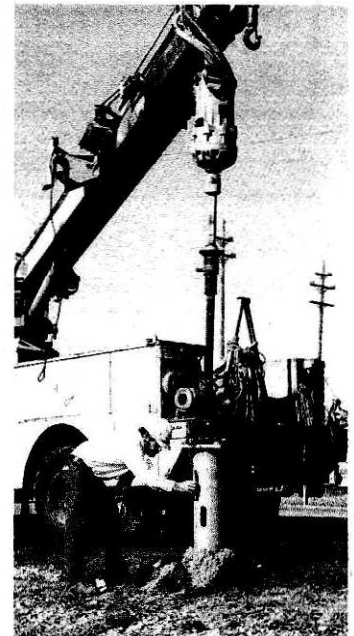
Attaching drive tool and kelly bar assembly to foundation.



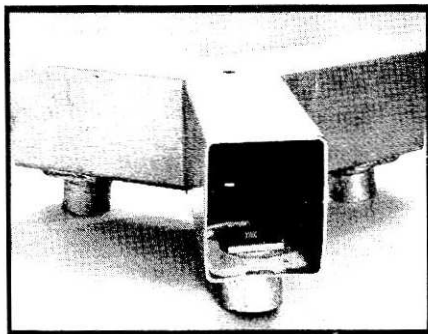
Initial phase of actual installation . . . point of foundation is inserted into the ground.



Plumbness is frequently checked as the foundation is installed.



FOUNDATION GRILLAGES AND CONNECTIONS



Tripod Grillage

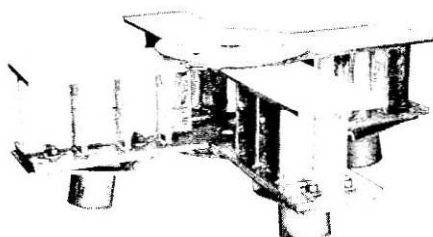
Tripod Grillages

Catalog No.	Description	Max. Compressive Load (KIPS)
C107-000203	Tripod to fit on 3" Pipe	125
*C107-001903	Tripod to fit on 3" Pipe	150
C107-019203	Tripod to fit on 3" Pipe	200
*T107-027803	Tripod to fit on 3" Pipe	250
C107-000208	Tripod with (3) 8" Pipe Adapters	125
*C107-001908	Tripod with (3) 8" Pipe Adapters	150
C107-019208	Tripod with (3) 8" Pipe Adapters	200
*C107-027808	Tripod with (3) 8" Pipe Adapters	250

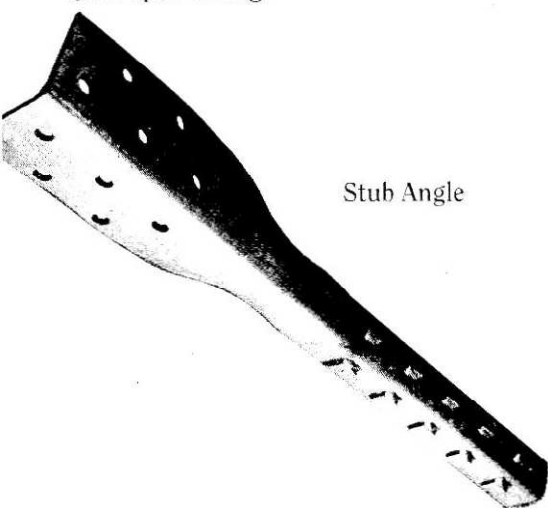
Quadrupod Grillage

*T107-030303	Quadrupod to fit on 3" Pipe	350
--------------	-----------------------------	-----

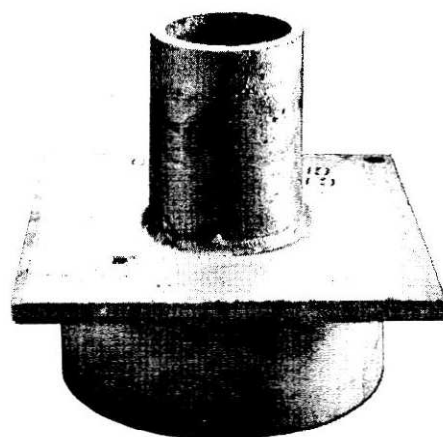
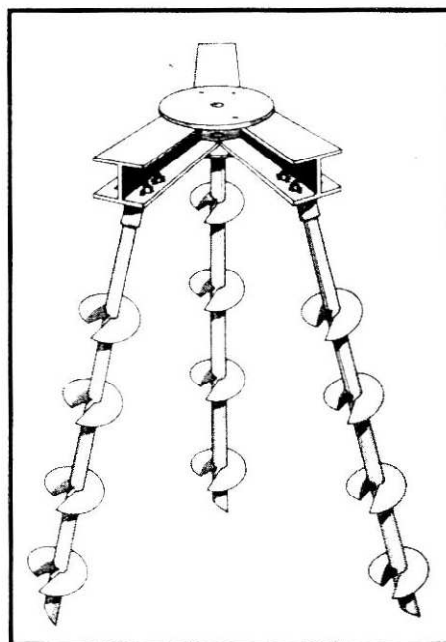
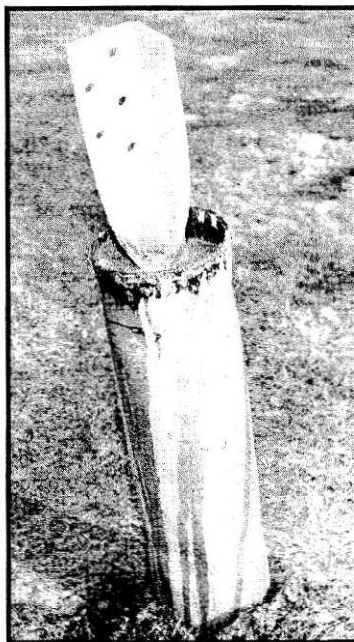
* Note: Grillages available on a made-to-order basis.



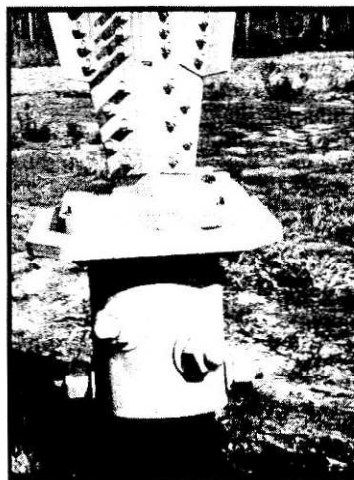
Quadrupod Grillage:



Stub Angle



Grillage Adapter for 8" IPS



C107-0004	Adapter for 8" Pipe
-----------	---------------------

INSTANT FOUNDATION™ System

POWER-INSTALLED, VERSATILE, ECONOMICAL

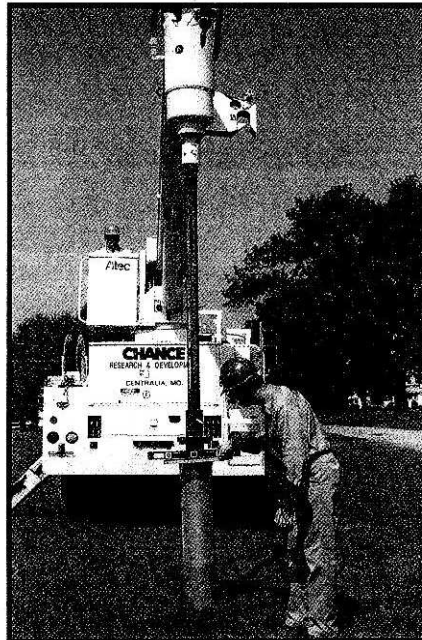
Over 90 years of research, development and testing have advanced our INSTANT FOUNDATION System to its present mature stage. Compared to traditional methods, the INSTANT FOUNDATION System offers attractive benefits in the conservation of labor, materials, equipment and, especially, time.

Power-installed foundation anchors have been proved in thousands of installations throughout the world. Chance engineers have installed, tested and retrieved countless foundation anchors to confirm performance and durability. The amount of torsional force required to install a foundation anchor relates to its installed ultimate capacity. This means that holding strengths are predictable in most soils by choosing a foundation anchor based on soil data and by measuring torque during installation.

A typical INSTANT FOUNDATION anchor can be installed in minutes using standard equipment. The superstructure can be mounted immediately — no waiting for concrete to cure. Chance foundation anchors can be installed in all weather conditions, thus eliminating weather-related delays. They can function as permanent installations or serve as temporary foundations. They can be easily retrieved and reused.

The Chance INSTANT FOUNDATION System includes a broad range of foundation anchors with various attachments for field adjustments. Chance support services include analysis of soil boring data, job-specific founda-

tion anchor recommendations, personnel training videos and hands-on demonstrations.



Non-extendable foundation

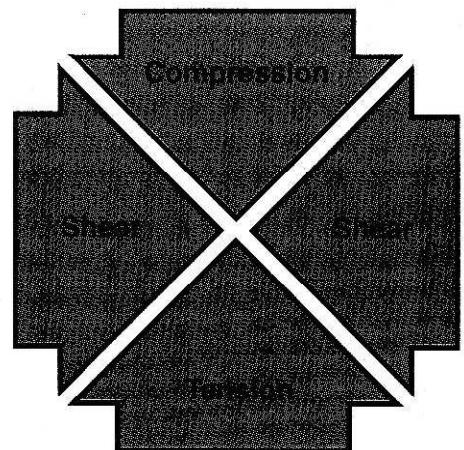


Extendable foundation

Advantages of INSTANT FOUNDATION™ anchors

- Capacity proportional to installing torque
- One trip convenience
No advance site preparation
No concrete required
- Clean. No excavation or spoils removal
- Reusable
- Easy to transport to job site
- Convenient storage
- No expensive anchor bolts
- Install through macadam
- Available from supplier stock
- Install with available equipment
- Clean. No excavation or spoils removal
- Ideal for areas with limited access

Overcome the stresses of tension, compression and shear



Chance INSTANT FOUNDATION System anchors install where and when you want them . . . quickly, economically and dependably.